

Fährmannshaus – Holiday Homes

Schlierbacher Landstr. 110, 69118 Heidelberg

Phone: 06221/889940 Fax: 06221/889941 E-Mail: roswitha.cira@web.de

Internet: www.ferienwohnungen-in-heidelberg.de

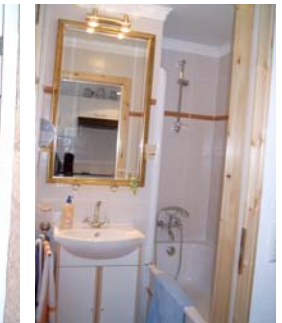
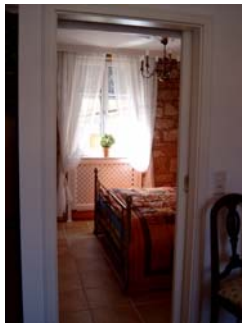


View of the Neckar river and the "Stift Neuburg"-monastery

Front View



FIRST FLOOR



Detailed description of flat:

Beautiful two-room-apartment, bright and sunny, newly renovated and restored (non-smoker-flat; smoking allowed in the yard).

The flat (about 40 square metres) , is in a historical sandstone building in Heidelberg – Schlierbach, at about 2500 m from the "Old Bridge", with a lovely view of the Neckar river and the "Stift Neuburg"-monastery. It is furnished with terracotta tiles, sandstone walls, and stuccoed ceilings, windowed bathroom with bathtub. Terrace where one can seat.

Parking in front of the building. Location easily reached via public transport.

Tariff (Rates are per person per night): 1 week: 45 €, 2 weeks: 44 €, 3 weeks: 43 €, starting from 4th week: 40 €. For each additional person: 10 €. Children under the age of 12 are free; special rates for longer periods by arrangement; cost of cleaning before departure: 30 € cleaning during stay possible on request

Location/Public Transport: Situated directly on road B37; suburban line station two bus stops away; 2 buses in immediate vicinity running every 10 minutes, going to Neuenheimer Feld (university hospitals), Altstadt (old town), Hauptbahnhof (main train station), Orthopädische Klinik"(orthopaedic hospital) in Schlierbach etc.

Furnishing and Fittings: Luxuriously furnished apartment, mostly antique furniture; bathroom with bathtub, fully-equipped kitchen (coffee machine, toaster, kettle, microwave-oven, fridge with freezer compartment, plates and cups in sufficient quantity, electrical appliances, dishwasher, oven); central heating, washing machine, TV-set (satellite system), radio/CD, vacuum cleaner, towels, pillows and blankets, sheets.

Further information on request.